

Useful Information for WCNC 2007

General

- WCNC 2007 is split between the Sheraton and the Peninsula hotels
- The hotels are across the road from each other and maps are shown overleaf
- The Sheraton hotel is the main conference hotel and all social events, business panels and plenary/keynotes are held there
- In the program guide all room locations should be assumed as being in the Sheraton hotel unless Peninsula hotel is specifically indicated
- You can reach the rooms in the Peninsula hotel by following the map overleaf and taking the elevator to the Salisbury foyer, floor M2.

Technical Sessions

- The 15 parallel technical sessions are split between the Sheraton and Peninsula hotels
- All Phy/MAC sessions are in the Sheraton hotel
- All Network track sessions are in the Peninsula hotel
- The Services and Applications track is split between both hotels
- In the program guide all room locations should be assumed as being in the Sheraton hotel unless Peninsula hotel is specifically indicated
- You can reach the rooms in the Peninsula hotel by following the map overleaf and taking the elevator to the Salisbury foyer, floor M2.

Lunches

- Lunches are provided to all attendees with full registration
- Because of limited space the lunches are held in 4 locations as follows:
 - Sky Lounge (International Buffet)
 - Someplace Else (SPE) (International Buffet)
 - Celestial Courts (Chinese)
 - Peninsula hotel- Salisbury foyer (International Buffet)
- You will be directed to the lunch venues by the student helpers after the morning session
- Load balancing of the lunch venues will be necessary if one becomes too popular so please be patient and tolerant if you cannot go to the venue you wish

Plenary/Keynotes

- These will be held in the Ballroom, Sheraton hotel on Monday and Tuesday 8:30-10:30am

Reception

- The reception will be held in the Ballroom, Sheraton hotel 6-9pm Sunday 11 March 2007. Food and drinks included. All welcome.

Banquet

- The banquet will be held at the peak restaurant café deco. Buses leave the Sheraton from the taxi stand at 6pm. All attendees with full registration welcome.

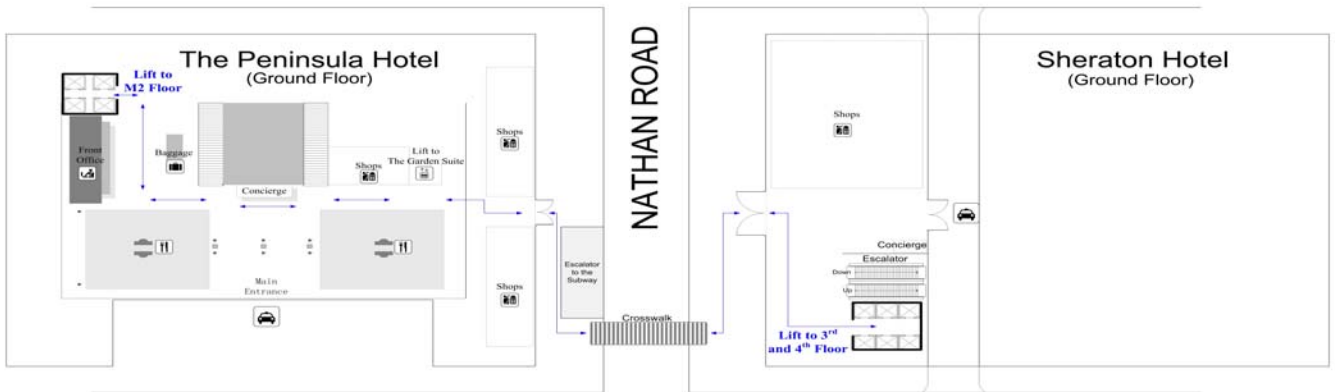
WLAN

Limited access in Ballroom, Sheraton and Salisbury foyer, Peninsula, Monday to Wednesday



Sheraton and Peninsula Hotels

MIDDLE ROAD

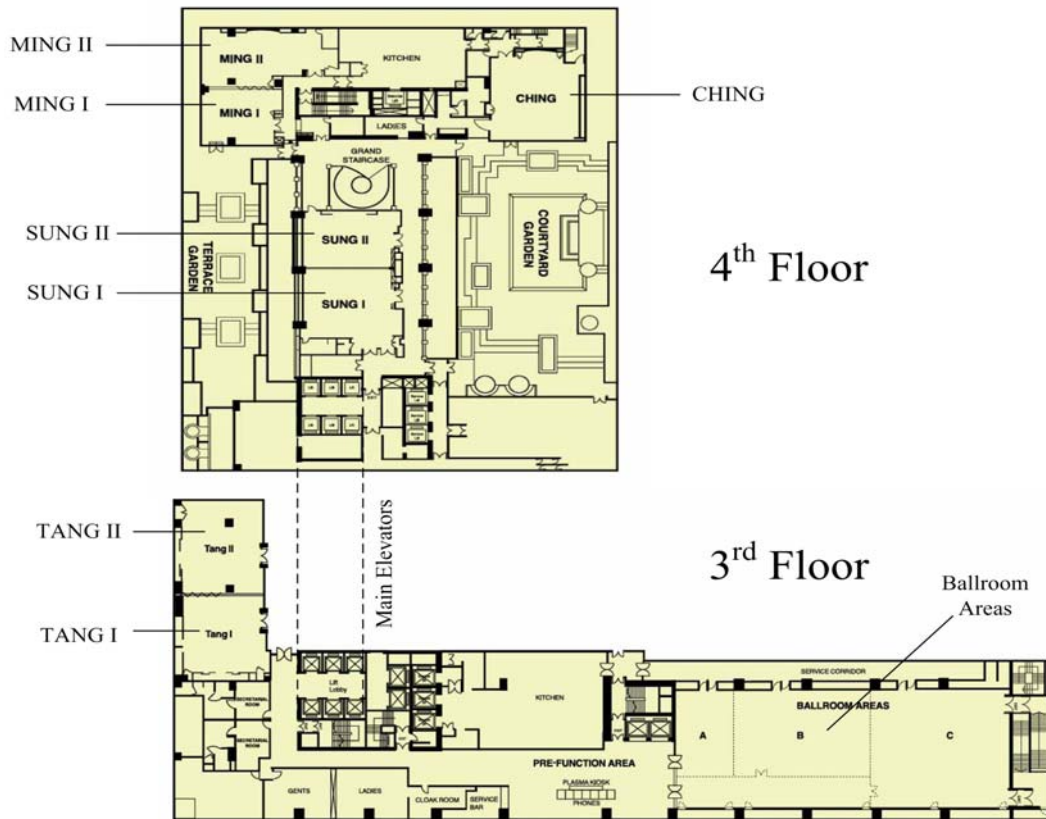


SALISBURY ROAD

Hong Kong Space Museum

Salisbury Garden

Sheraton Hotel- floors 3 and 4



Peninsula Hotel- floor M2

